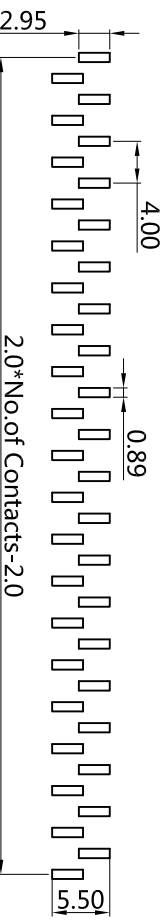
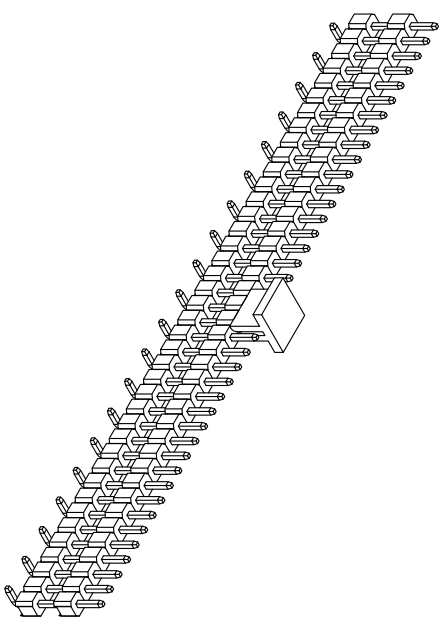
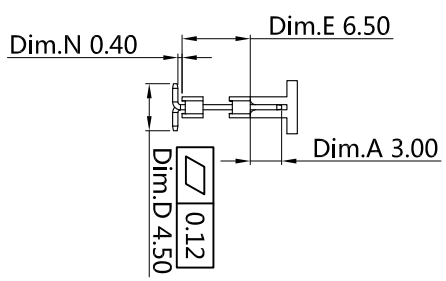
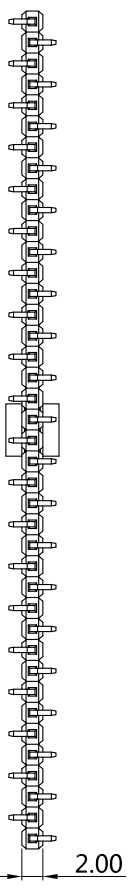
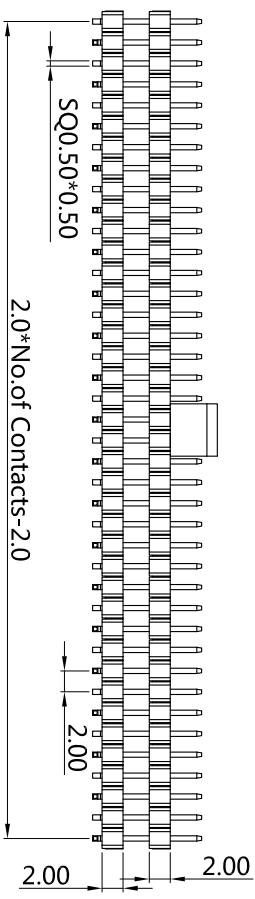
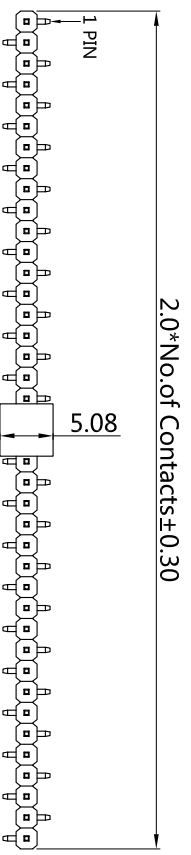


A Type



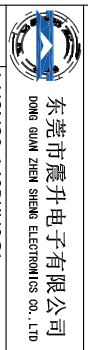
Recommended P.C. Board
SMD Layout

Current Rating: 2 Amps
Insulator Resistance: 1000 Megohms min
Dielectric Withstanding: AC 500V
Contact Resistance: 20mΩ MAX
Operation Temperature: -40~+105°C
Max processing temp: 230°C for 60seconds
Max processing temp: 260°C for 10seconds
Contact Material: Brass
Insulator material: Standard: Polyester, UL 94V-0
Standard: PA6T
Finish: Tin Gold Plated
Standard: Gold Flash all over

(RoHS Compliant)
H2 X 20 - 1 XX DA BK X D30 E
 1 2 3 4 5 6 7

1. Insulator material: 5. Contact Plated:
 N=PA6T T=Matte Tin over Nickel I=Gold 1μ"
 L=LCP P=PA9T W=Matte Tin over nickel 150μ" E=Gold 5μ"
 2. Circuits:2-40 PIN Y=Bright Tin over Nickel G=Gold 10μ"
 3. Tail Style: F=Gold Flash, Matte Tin 100μ" J=Gold 10μ"
 DA= A Type A=Gold 3μ" L=Gold 10μ"
 DB= B Type B=Gold 3μ" M=Gold 15μ"
 4. Color: C = ordinary gold plating U=Gold 30μ"
 BK=Black D=Gold 5μ" V=Gold 30μ" Matte Tin 100μ"

6.Special Options
7. Packing:
 A=Bag B=Tube
 D=Small box E=Cap+Reel



东莞市震升电子有限公司
 DONG GUAN ZHEN SHENG ELECTRONICS CO., LTD

TEL:0769-853505015 FAX:0769-85845060	1:H2N20-140BKHC1	PART NO.	H2X20-1XXDABKXD30X	.X	.XX	.XXX
	BOM 2:SQ0.5-12.1-X-C12	DRAWING NO	ZS-10069-P	±0.30	±0.20	±0.1
	3:H2N-CAP-DO-C4	DRAWN BY	Deng jin quan	EDITION:A1	2021-12-25	SCALE:1:1
		APPROVAL BY	Chen xiao guang	2021-12-27		UNIT:M.M